

# **HYNDS WINGWALLS**

## **ONE-PIECE, PRECAST CONCRETE UNITS**

- **HIGH DURABILITY**  
MANUFACTURED FROM 40MPA CONCRETE
- **EROSION PROTECTION**  
REDUCES LONG TERM MAINTENANCE COSTS
- **EXTENSIVE RANGE**  
AVAILABLE IN 100 TO 2050 DIAMETERS



**0800 WE PIPE (93 7473)**  
**[www.hynds.co.nz](http://www.hynds.co.nz)**

**HYNDS**

## APPLICATIONS

- Culvert inlets and outlets
- Stormwater outfalls
- Erosion protection

## UNIQUE BENEFITS

- Easy to install
- Reduced installation time
- Designed to minimise mass
- Economical
- Improves inlet and outlet hydraulics
- Erosion protection
- Extensive range of sizes available
- Quality precast concrete

## INTRODUCTION

Hynds Pipe Systems offer a range of one-piece wingwall units, which provide improved inlet and outlet hydraulics for culverts, stormwater outfalls and protection against erosion.

**Please Note:** A separate range of wingwalls is available for Transit applications where mountable or traversable options are specified for safety reasons – refer to Datasheet D:39.

Table 1: Wingwall dimensions.

PRODUCT CODE	NOMINAL PIPE DIAMETER	WINGWALL TYPE	A	B	C	D	E	F	G	t	WEIGHT
WW0300	100 to 300	Standard	190/390	100	600	460	520	200	160	60	205
WW0600	300 to 675	Standard	390/790	2150	745	810	1000	250	390	90	828
WW0600TYPE2	300 to 600	Standard	700	2295	735	805	805	255	315	80	787
WW0600L	300 to 600	Long Throat	370/700	1950	1100	750	900	280	500	80	858
WW1050	600 to 1050	Standard	720/1225	3000	1000	1270	1675	345	600	100	1800
WW1050M.DU	600 to 1050	Marine (Hydura Mix)	720/1225	3000	1000	1270	1675	345	600	135	2970
WW1050M.MS	600 to 1050	Marine (M S Mix)	720/1225	3000	1000	1270	1675	345	600	135	2970
WW1350	1200 to 1350	Standard	1380/1540	4100	2400	1600	1975	425	750	125	6400
WW1350M.DU	1200 to 1350	Marine (Hydura Mix)	1380/1540	4100	2400	1600	1975	425	750	125	6400
WW1350M.MS	1200 to 1350	Marine (M S Mix)	1380/1540	4100	2400	1600	1975	425	750	125	6400
WW1800	1600 to 1800	Standard	1727/2040	4900	2400	2150	2265	450	750	150	8020
WW1800MDU	1600 to 1800	Marine (Hydura Mix)	1727/2040	4900	2400	2150	2265	450	750	150	8020
WW1800M.MS	1600 to 1800	Marine (M S Mix)	1727/2040	4900	2400	2150	2265	450	750	150	8020
	2050 and above	Special	Precast side panels, insitu floor and headwall. Contact Hynds Technical Services Department for dimensions and more information								

- Notes:**
- Contact your nearest Hynds Sales Branch for wingwalls to suit pipe sizes 2050mm and above.
  - Weight and dimensions shown may vary according to factory of manufacture.
  - Dimensions in millimetres.
  - A – Hole or opening diameter.

## STRENGTH & DURABILITY

Hynds wingwalls are manufactured in 40MPa concrete for high durability. Marine options in 50MPa Hydura concrete and 50MPa Micro Silca concrete are available on request, for use in tidal zones.

## INSTALLATION

Wingwalls are fitted with strategically placed lifting anchors cast into the concrete, to allow for safe off-loading, and easy economical installation by the contractor.

Wingwalls should be installed on compacted level hardfill with a suitable trench cut to accept the wingwall toe.

A preformed hole or softspot is provided in the headwall to accept the end of the pipe. The contractor finishes installation by filling the gap between the headwall and the pipe with epoxy mortar.

Figure 1: Plan

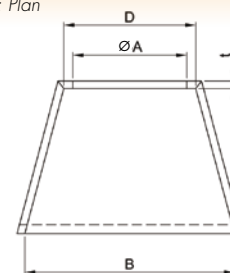


Figure 2: Elevation

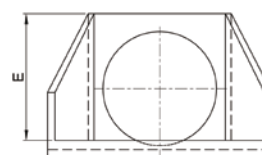
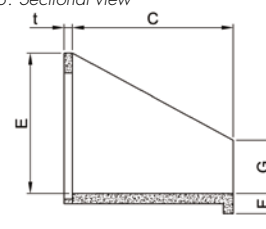


Figure 3: Sectional view



## HYNDS SUPPORT CENTER

P. 09 274 0316 F. 09 274 8393 E. techservice@hynds.co.nz

### NORTHERN REGION

**WHANGAREI** 09 438 7305  
**WARKWORTH** 09 425 9837  
**ALBANY** 09 415 9259  
**AVONDALE** 09 820 0122  
**PENROSE** 09 579 5605  
**MANUKAU** 09 273 3053  
**PUKEKOHE** 09 237 1274

### CENTRAL REGION

**HAMILTON** 07 847 3193  
**TAURANGA** 07 575 5791  
**ROTORUA** 07 346 0454  
**TE KUITI** 07 878 8326  
**TAUPO** 07 378 9915

### CAPITAL REGION

**HASTINGS** 06 879 8989  
**NEW PLYMOUTH** 06 759 8157  
**PALMERSTON NORTH** 06 357 2638  
**MASTERTON** 06 370 0700  
**KAPITI** 04 297 0689  
**PETONE** 04 568 0933  
**KAIWHARAWHARA** 04 472 4172

### SOUTH ISLAND REGION

**NELSON** 03 543 8330  
**BLENHEIM** 03 579 1332  
**AMBERLEY** 03 314 8455  
**CHRISTCHURCH** 03 344 3500  
**OAMARU** 03 434 3062  
**CROMWELL** 03 445 4760  
**WINTON** 03 236 6044